

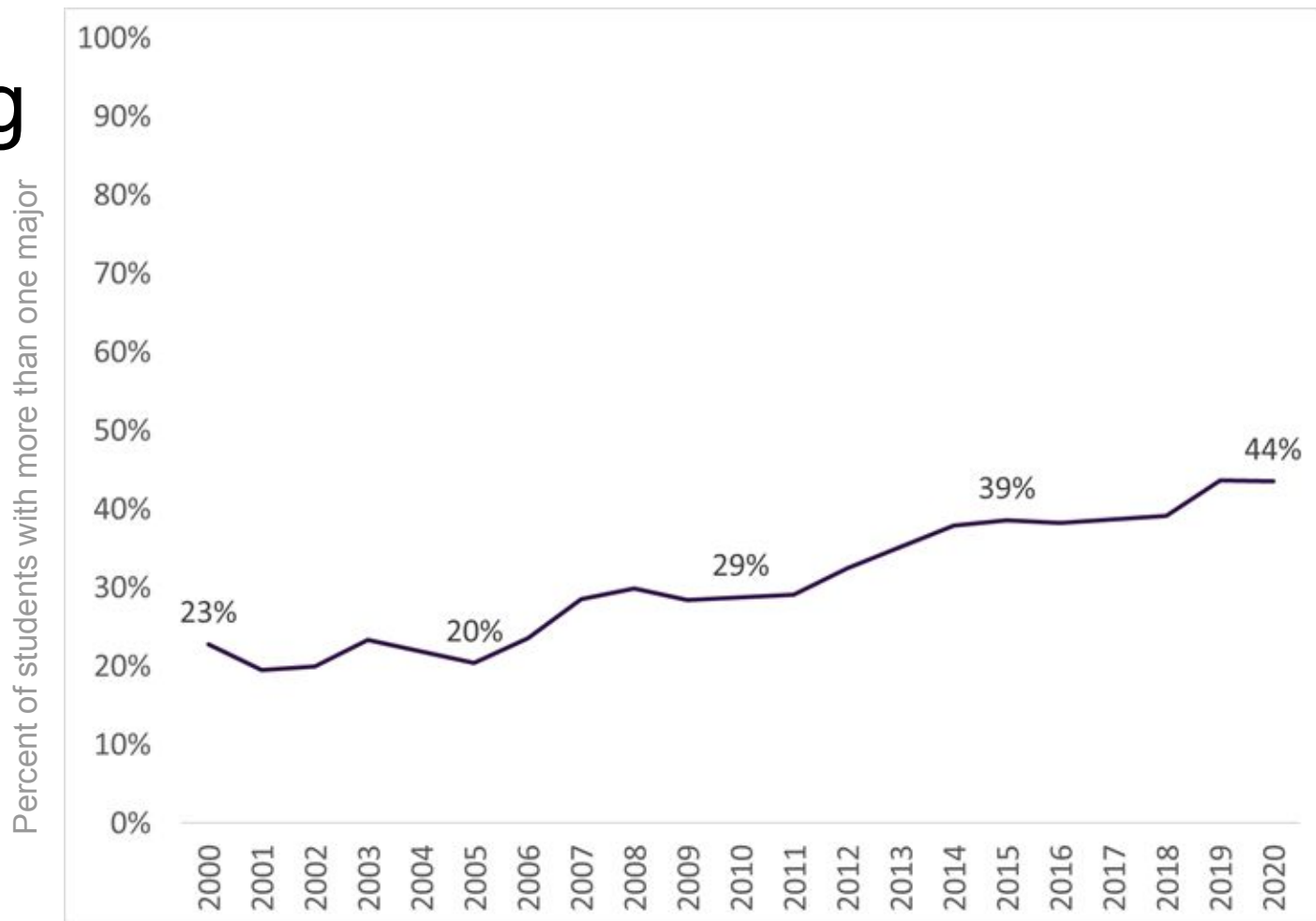


An Exploration

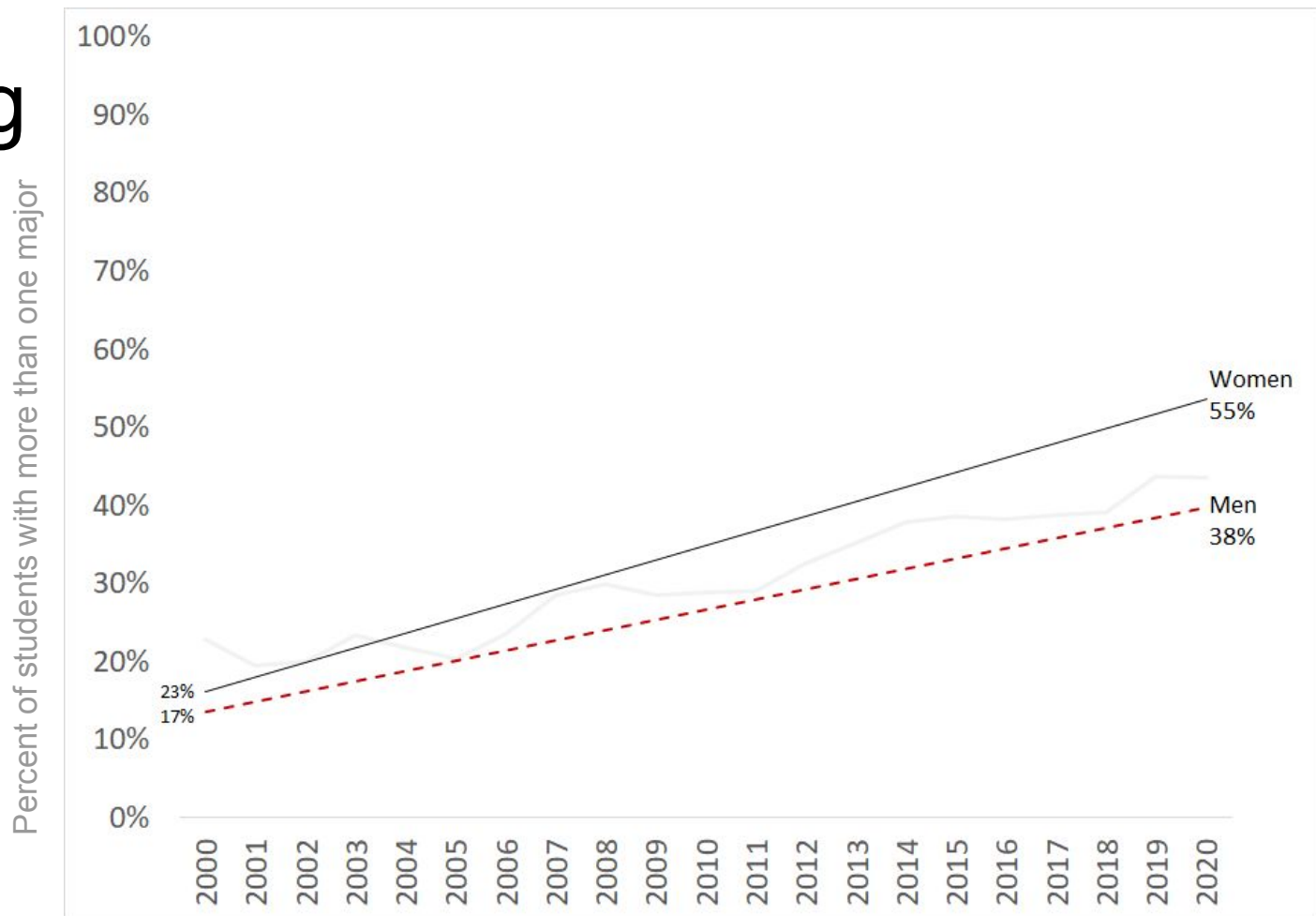
Office of Institutional Research

April 2021

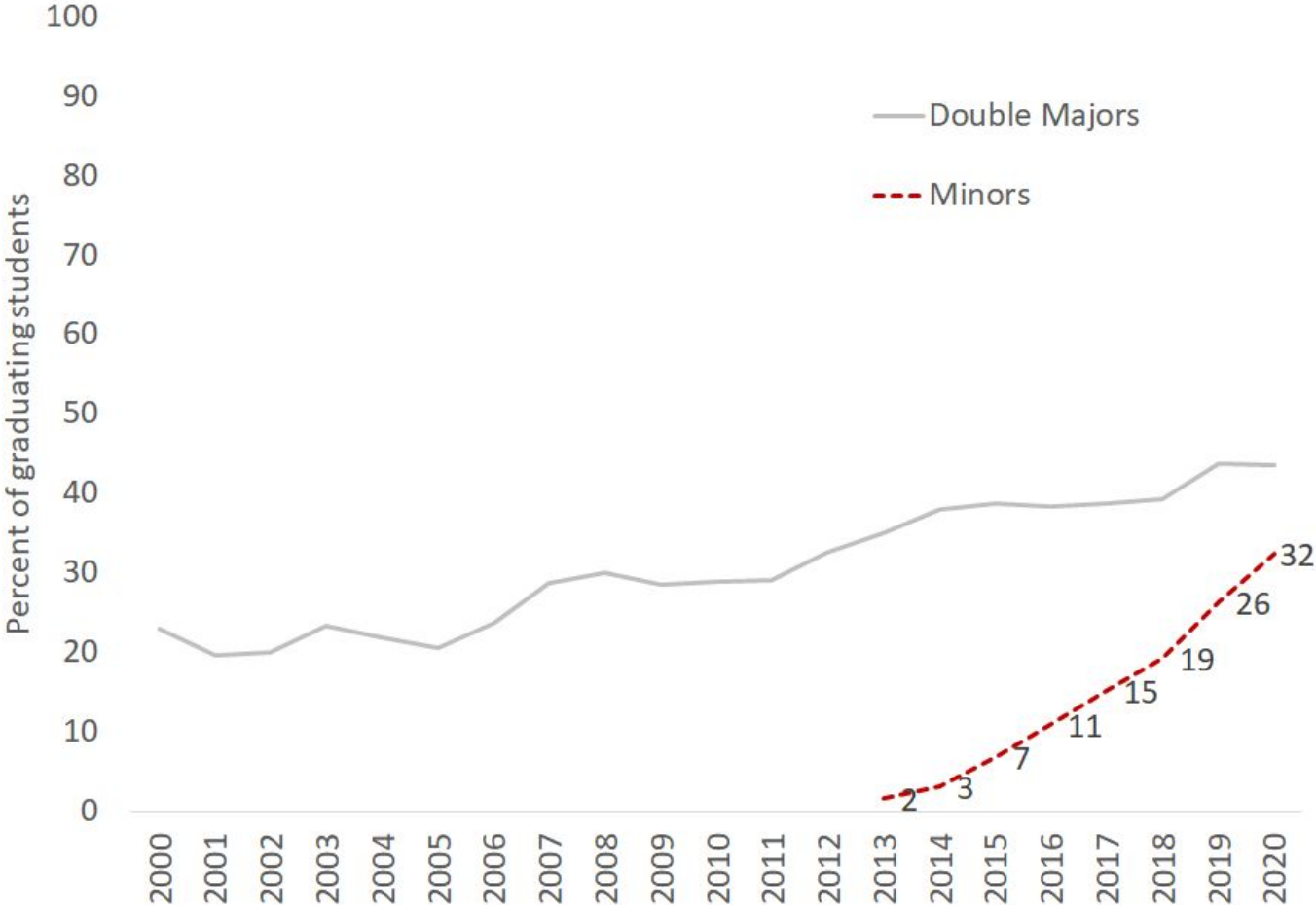
Graduating Double Majors



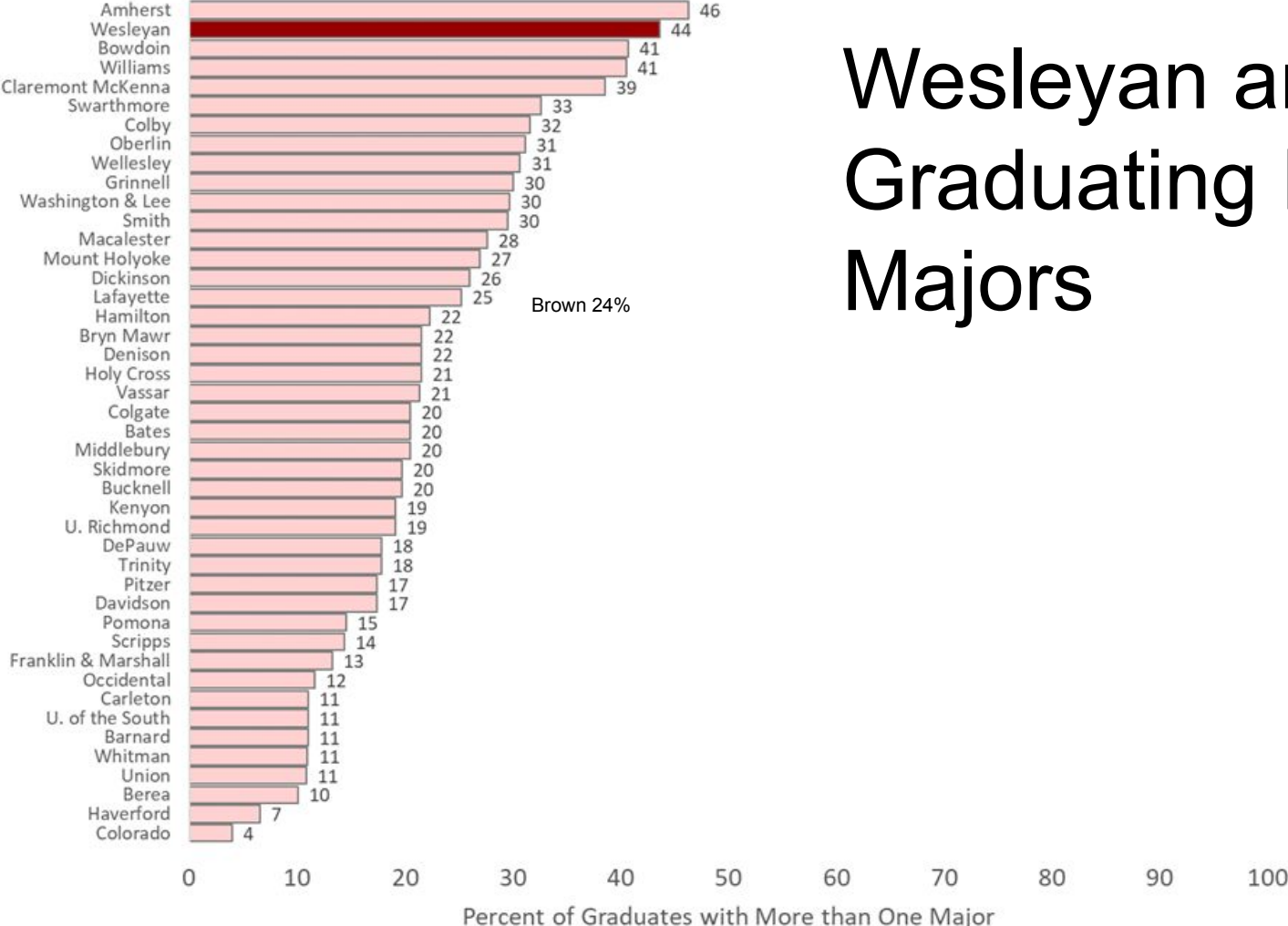
Graduating Double Majors



Minors

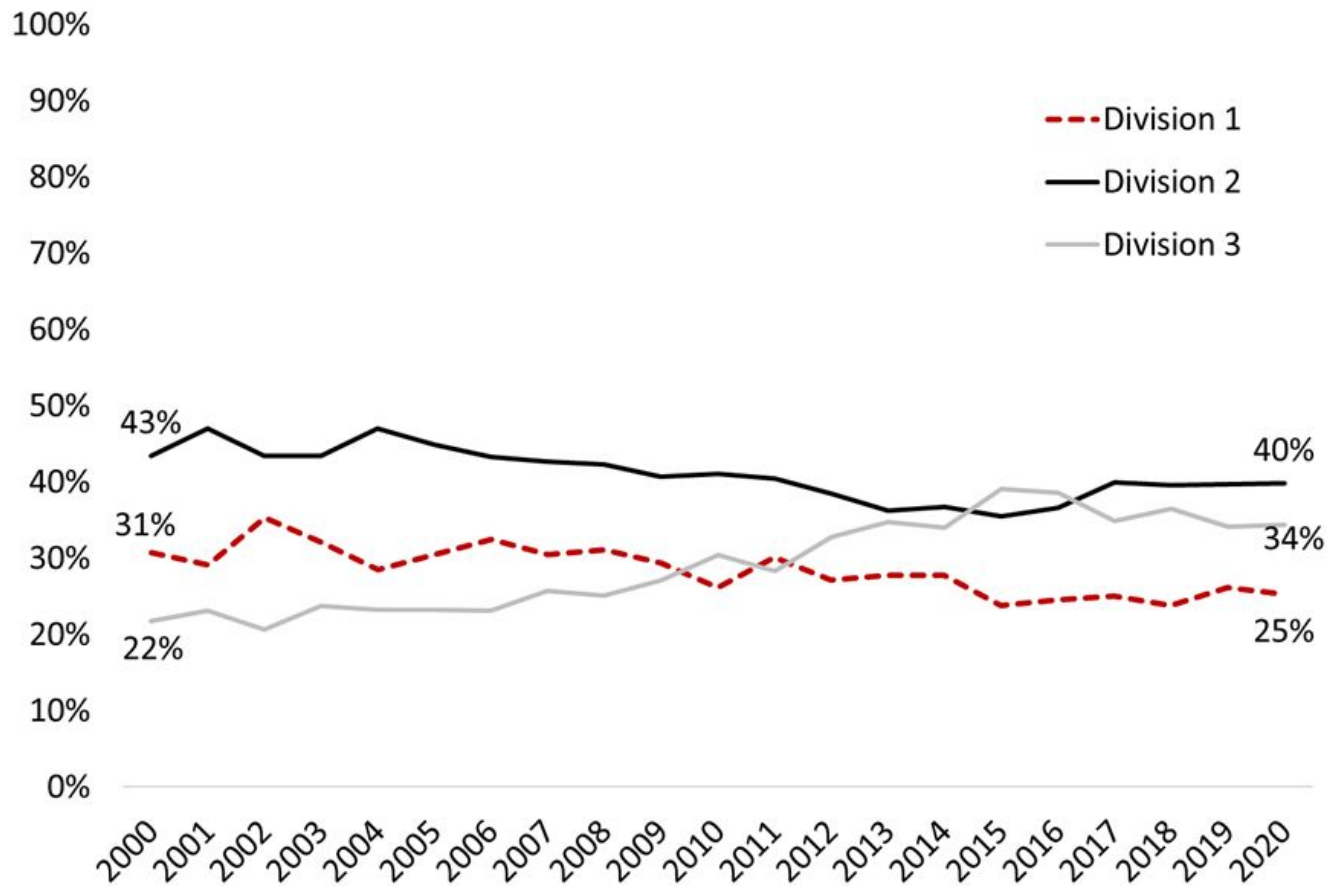


Wesleyan and Peers: Graduating Double Majors

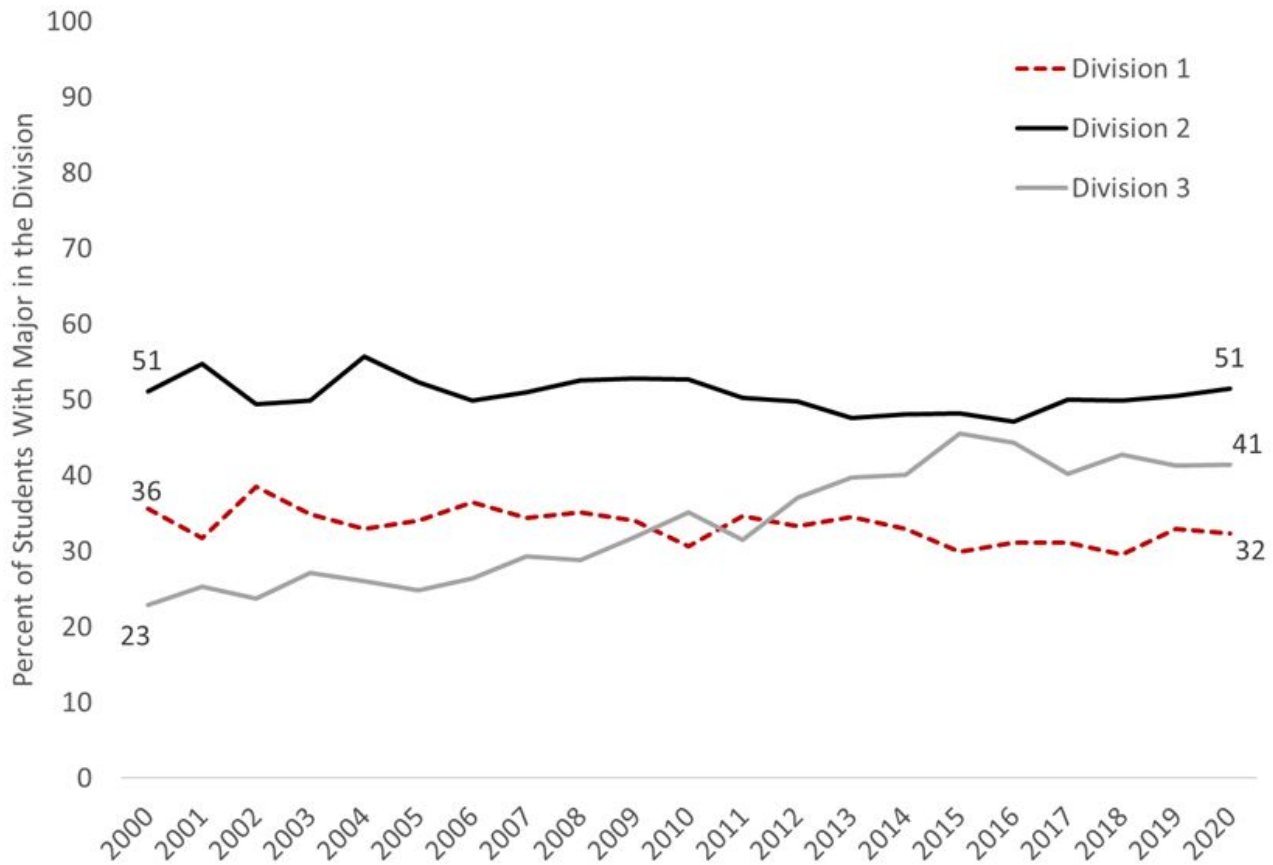


Source: 2018-19 IPEDS Completions Survey

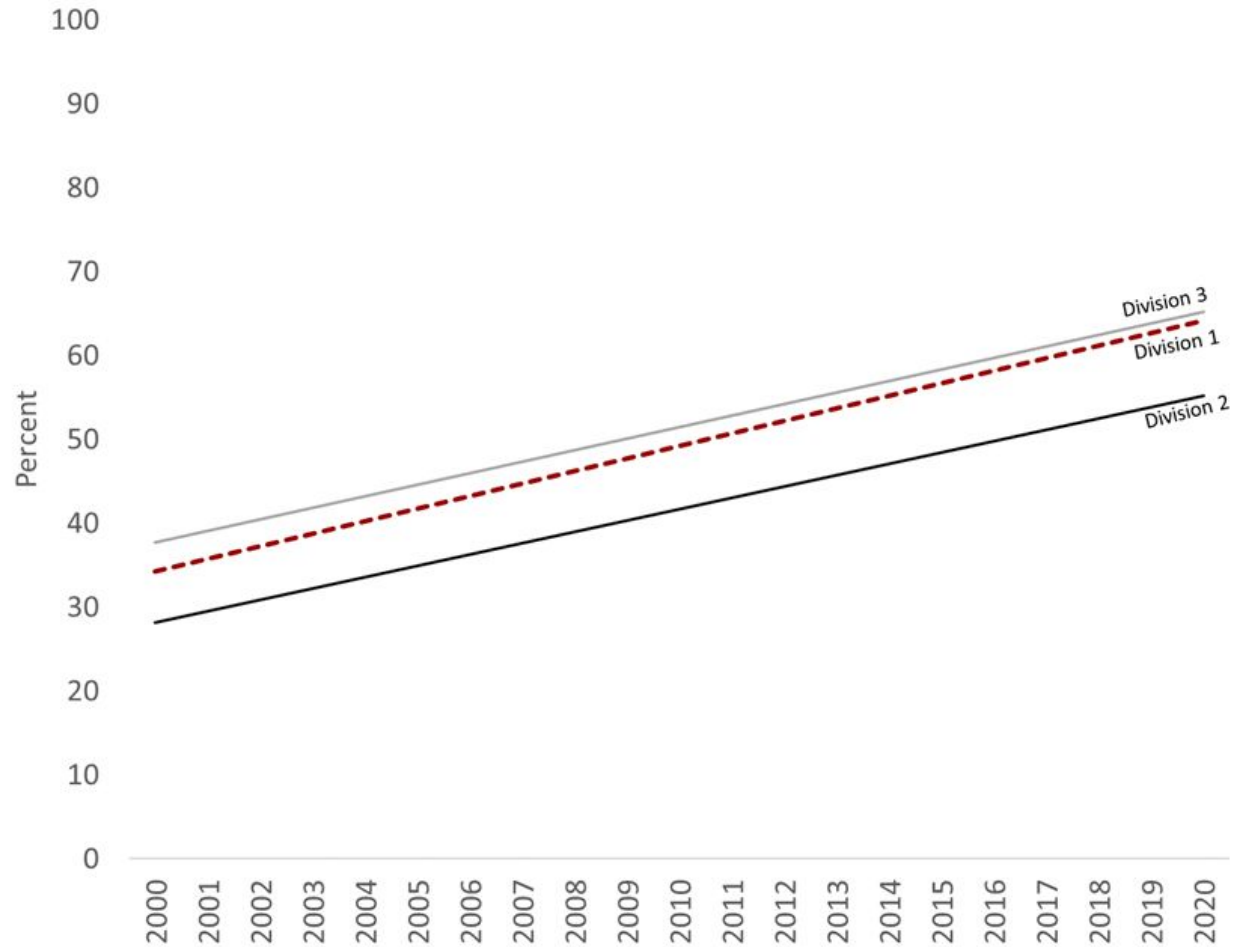
Graduating Majors By Division



Graduating Students By Division



Trend: percent
of majors
who are
double majors



Graduating Majors, Classes of 2016-2020

- 46 major fields of study
 - 1,035 possible pairs
 - 424 of which were realized
- 3,775 students graduated, 5,358 graduating majors:
 - 2,247 single majors (60%)
 - 1,473 double majors (39%)
 - 55 triple majors (1%)
- “Double major” – a student with more than one major, including triple majors; triple major treated as three double majors.

Combinations by Division

Percent of all double majors

Division 1 42%

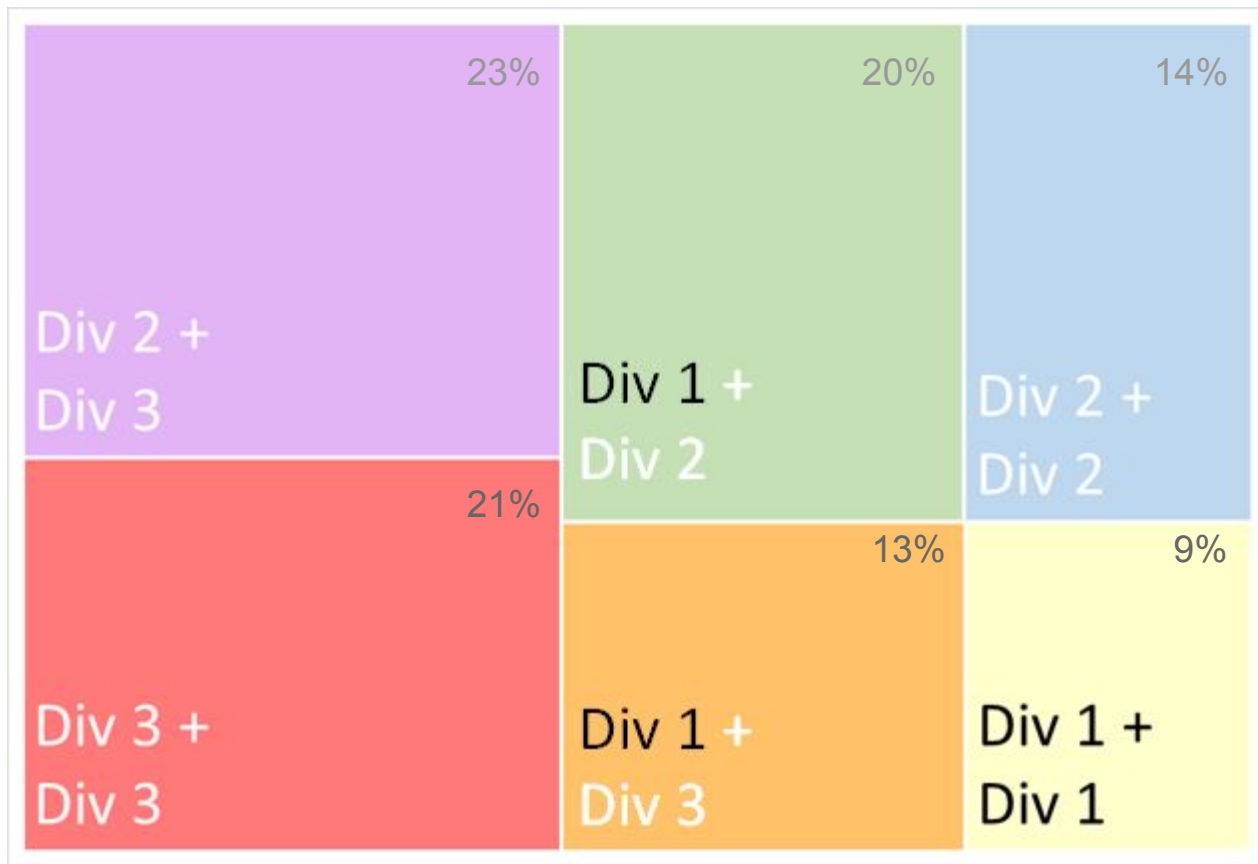
Division 2 57%

Division 3 57%

Combinations

56% inter-divisional

44% intra-divisional



Combinations by Division

Percent of all double majors

Division 1 42%

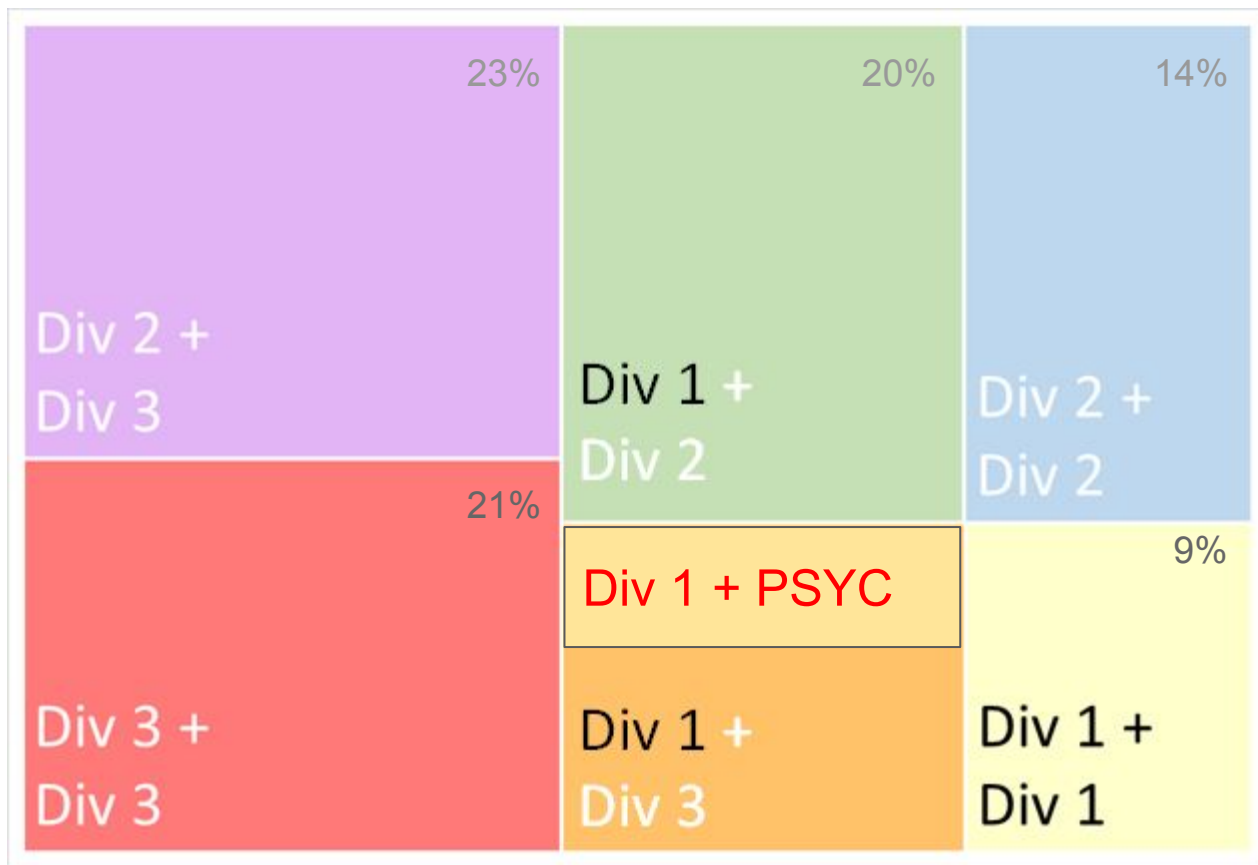
Division 2 57%

Division 3 57%

Combinations

56% inter-divisional

44% intra-divisional



Top Combinations, Past 5 Graduating Classes

| Combination | | Number of students (out of 1,638) | Percent of all double majors |
|-------------|-------------|-----------------------------------|------------------------------|
| BIOL | NS&B | 52 | 3.2 |
| ECON | MATH | 48 | 2.9 |
| NS&B | PSYC | 47 | 2.9 |
| ECON | GOVT | 45 | 2.7 |
| COMP | MATH | 40 | 2.4 |
| ECON | PSYC | 39 | 2.4 |
| CHEM | MB&B | 25 | 1.5 |
| ENGL | FILM | 23 | 1.4 |
| NS&B | SISP | 21 | 1.3 |
| COMP | ECON | 19 | 1.2 |
| PSYC | SISP | 19 | 1.2 |
| AMST | ENGL | 18 | 1.1 |
| BIOL | SISP | 16 | 1.0 |
| ENGL | PSYC | 16 | 1.0 |
| GOVT | PSYC | 16 | 1.0 |
| MB&B | SISP | 15 | 0.9 |

| Combination | | Number of students (out of 1,638) | Percent of all double majors |
|-------------|-------------|-----------------------------------|------------------------------|
| ASTR | PHYS | 15 | 0.9 |
| BIOL | ENVS | 15 | 0.9 |
| ENGL | THEA | 14 | 0.9 |
| FRST | GOVT | 14 | 0.9 |
| AMST | GOVT | 13 | 0.8 |
| CIS | MB&B | 13 | 0.8 |
| MATH | PHYS | 12 | 0.7 |
| ENGL | GOVT | 11 | 0.7 |
| CSS | ECON | 11 | 0.7 |
| GOVT | HIST | 11 | 0.7 |
| FILM | PSYC | 11 | 0.7 |
| HISP | PSYC | 11 | 0.7 |
| ENGL | FRST | 10 | 0.6 |
| BIOL | PSYC | 10 | 0.6 |
| MB&B | NS&B | 10 | 0.6 |

Total 459 28.0

Plus...

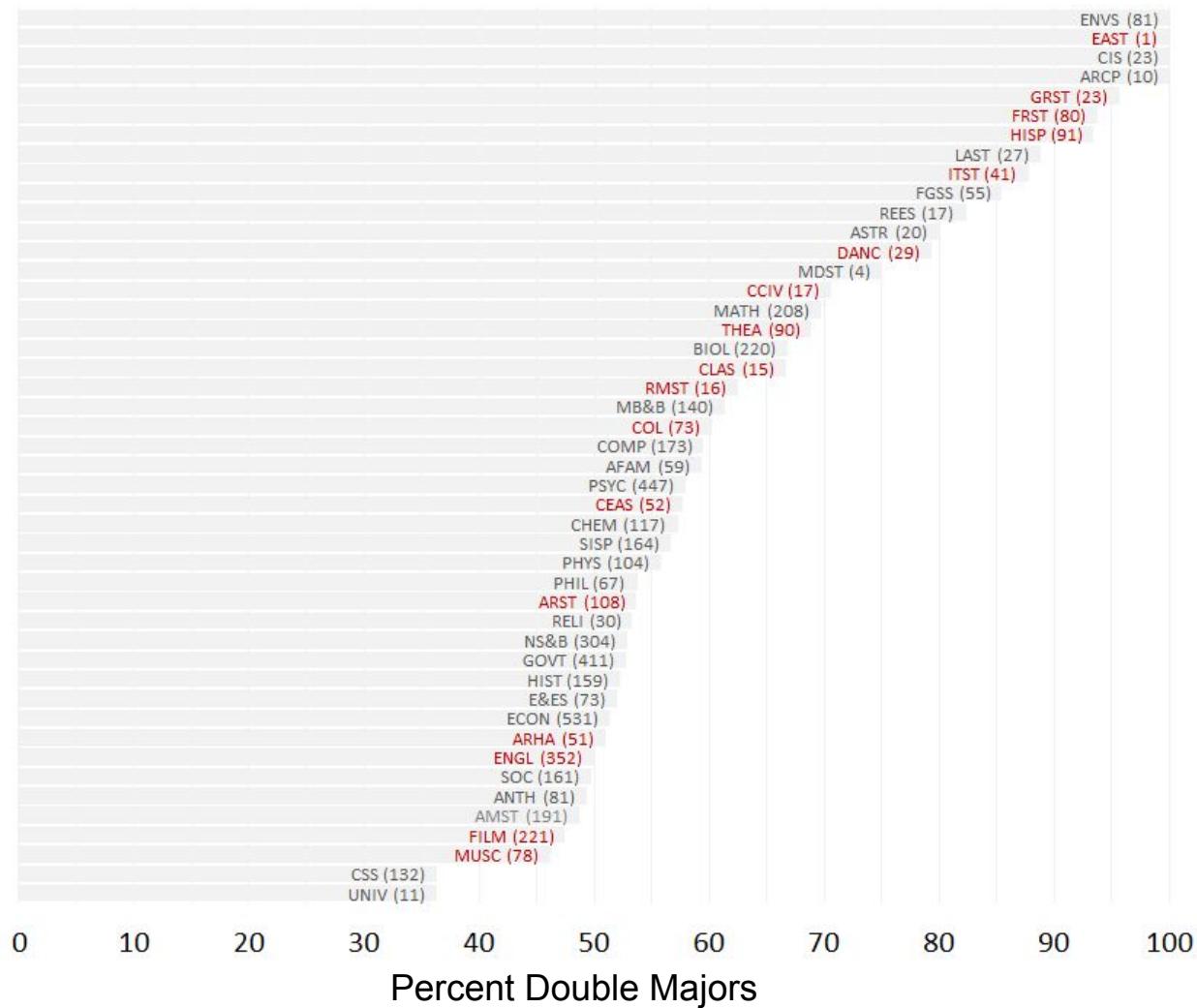
7...diff. major combos w/... 9 students each
 10 8
 11 7
 16 6
 18 5
 26 4
 50 3
 83 2
 172 1

Top Combinations with One or More Division 1 Major, 2016-2020 Graduates

7 of the top 10 include ENGL

| Combination | Number in the past 5 graduating classes | Combination | Number in the past 5 graduating classes |
|-------------|---|-------------|---|
| ENGL FILM | 23 | FILM GOVT | 8 |
| ENGL AMST | 18 | ECON FILM | 8 |
| ENGL PSYC | 16 | ARST SOC | 7 |
| ENGL THEA | 14 | COL GRST | 7 |
| FRST GOVT | 14 | ECON FRST | 7 |
| ENGL GOVT | 11 | ENGL FGSS | 6 |
| FILM PSYC | 11 | COL FRST | 6 |
| HISP PSYC | 11 | HISP SOC | 6 |
| ENGL FRST | 10 | HISP LAST | 6 |
| ENGL HISP | 9 | FRST HIST | 6 |
| CEAS GOVT | 9 | AMST FILM | 6 |
| FRST PSYC | 9 | AMST HISP | 6 |
| GOVT HISP | 9 | ECON MUSC | 6 |
| ENGL SOC | 8 | BIOL FRST | 6 |

Double Majors by Field, 2016-2020 Graduates



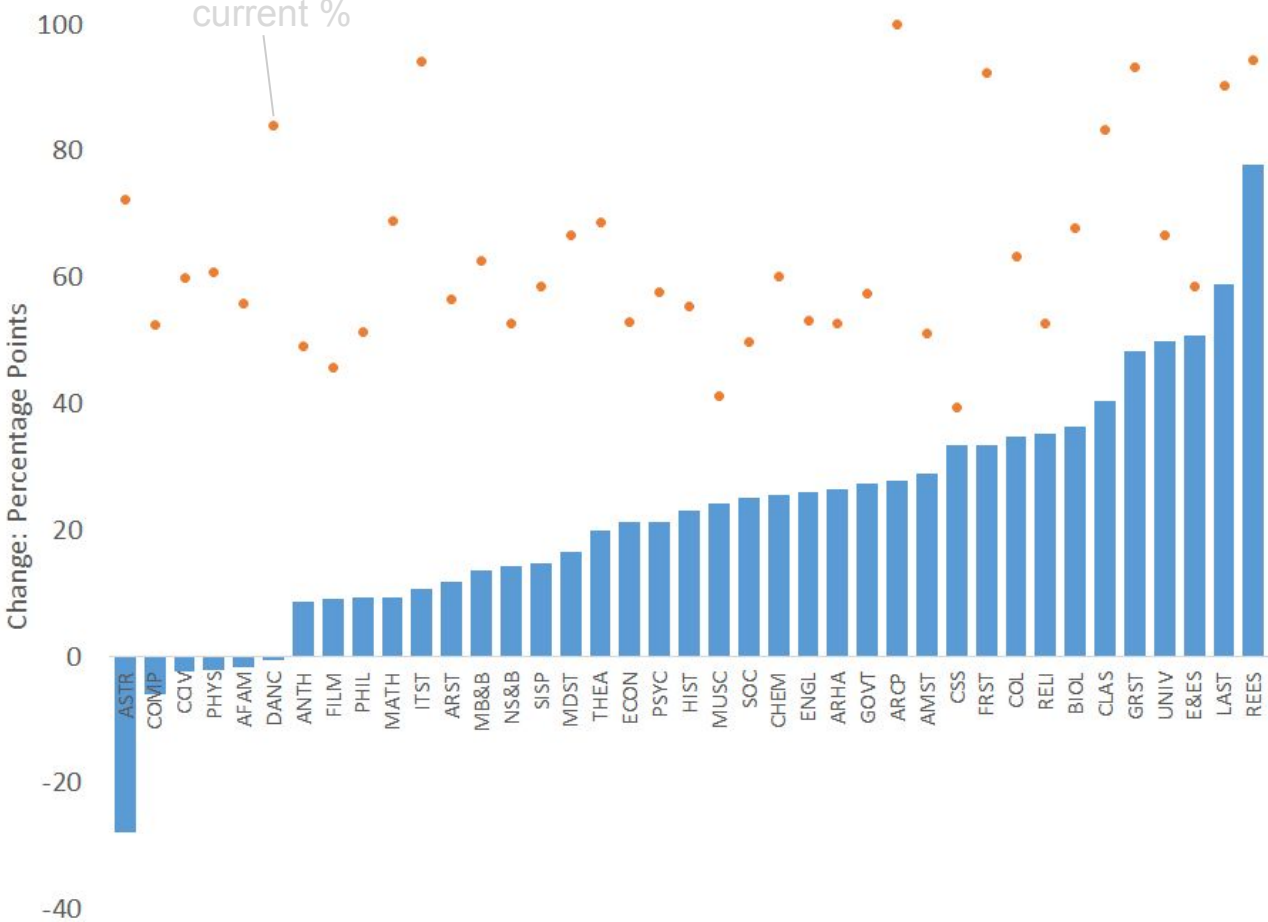
Triple Majors, Classes of 2016-20

| | | |
|------|------|------|
| AFAM | SOC | AMST |
| ANTH | E&ES | BIOL |
| ANTH | BIOL | ENVS |
| ARCP | ITST | COL |
| ARHA | ECON | MATH |
| ASTR | E&ES | PHYS |
| ASTR | COMP | PHYS |
| ASTR | ENGL | PHYS |
| BIOL | PSYC | NS&B |
| BIOL | NS&B | MATH |
| BIOL | PSYC | NS&B |
| BIOL | NS&B | ECON |
| BIOL | NS&B | HISP |
| BIOL | NS&B | MB&B |
| BIOL | MATH | NS&B |
| BIOL | NS&B | PSYC |
| CHEM | MB&B | CIS |
| CHEM | SISP | NS&B |
| CHEM | REES | MB&B |

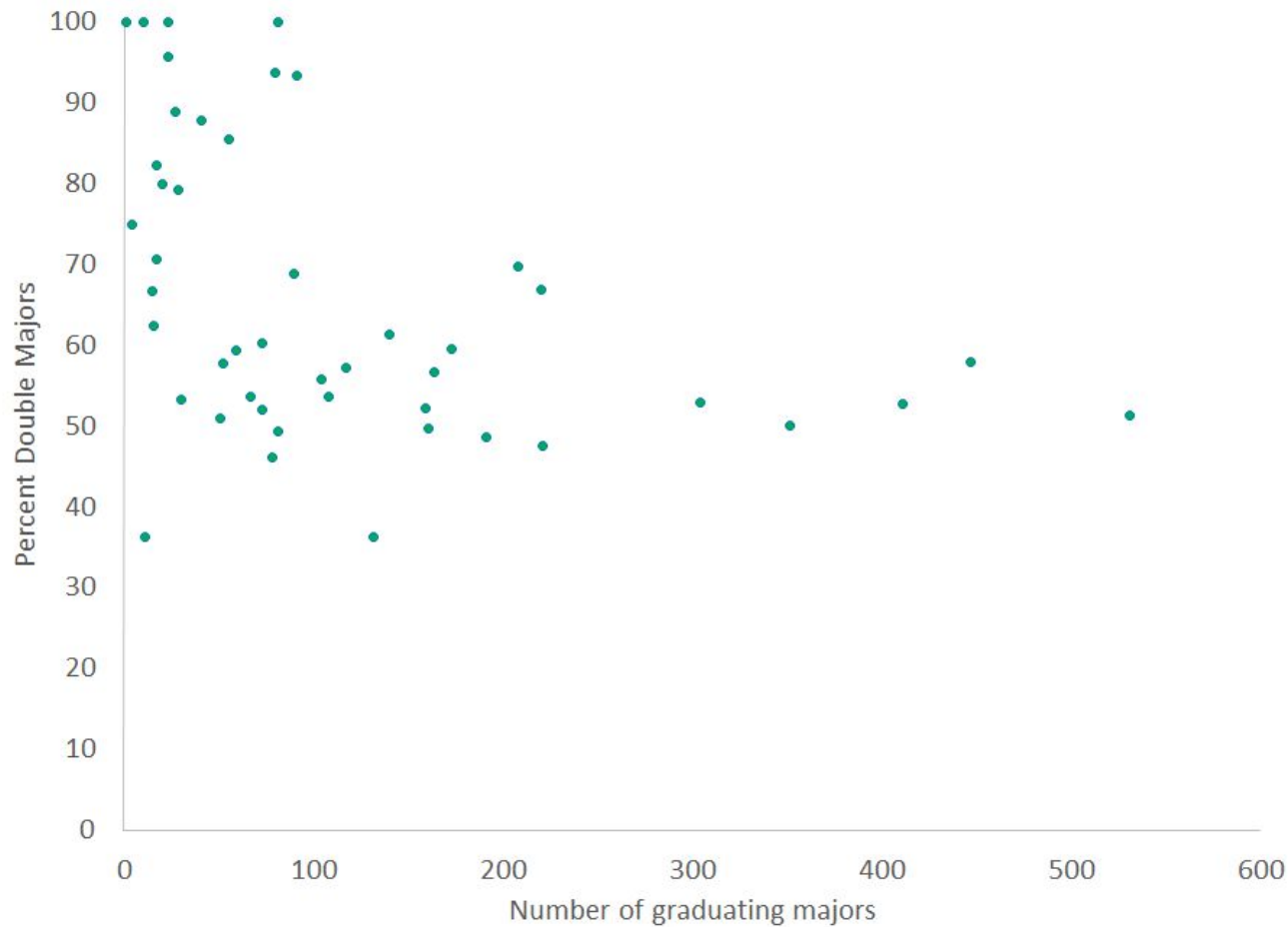
| | | |
|------|------|------|
| CHEM | ECON | MB&B |
| CHEM | SISP | MB&B |
| CHEM | CIS | PHYS |
| CIS | PHYS | MATH |
| CIS | SISP | MB&B |
| CIS | MB&B | SISP |
| CIS | HISP | PSYC |
| CIS | NS&B | MB&B |
| CLAS | MDST | CSS |
| CLAS | MDST | COL |
| COL | FRST | HIST |
| COL | MATH | HISP |
| COL | FRST | PSYC |
| COL | PSYC | GRST |
| COL | HIST | GRST |
| COMP | NS&B | MATH |
| COMP | PHYS | MATH |
| COMP | ECON | MATH |
| COMP | ECON | NS&B |

| | | |
|------|------|------|
| CSS | SOC | ECON |
| CSS | MATH | ECON |
| ECON | MATH | ENVS |
| ECON | SISP | NS&B |
| ECON | ENVS | MATH |
| ECON | GOVT | FRST |
| ENGL | GOVT | FRST |
| ENGL | PSYC | SISP |
| ENVS | GOVT | FRST |
| GOVT | HISP | LAST |
| GOVT | PSYC | HISP |
| HISP | LAST | SOC |
| HIST | THEA | ITST |
| HIST | LAST | THEA |
| NS&B | SISP | PSYC |
| NS&B | SISP | PSYC |
| PHYS | PSYC | REES |

Change in Double Majors: 2000-02 to 2018-2020



Double Majors And Size



Reasons why?

Why students might not double major

Personal

- Not interested
- Difficult primary major
- Extracurricular commitments
- Athletics commitments
- Friends aren't double majoring
- Poor planning early on
- Time

Structural

- Scheduling conflicts with primary major
- Study abroad conflicts
- Necessary courses not offered enough

Why students might double major

Personal

- Multiple/overlapping interests
- Easy primary major
- Friends are double majoring
- Parental pressure
- Job/grad school prospects
- Desire for credentials
- Seeking structure in open curriculum

Structural

- Double dipping opportunities
- Minimal credit requirements for each major
- No general education requirements & fluid expectations